

# Introductory Section

- **Table of Contents**
- **Directory of Officials**
- **School District Organizational Chart**
- **Letter of Transmittal**
- **Certificate of Excellence in Financial Reporting**



**Auburn School District No. 408  
Comprehensive Annual Financial Report  
For the Fiscal Year Ended August 31, 2012**

**TABLE OF CONTENTS**

Schedule No.   Page No.

***I. INTRODUCTORY SECTION***

Table of Contents	i
Directory of Officials	iv
Organizational Chart	vi
Letter of Transmittal	1
Certificate of Excellence in Financial Reporting	7

***II. FINANCIAL SECTION***

8

<b>Independent Auditor's Report</b>	9
<b>Management's Discussion and Analysis</b>	11

**Basic Financial Statements**

<b>Government-Wide Financial Statements</b>		22
Statement of Net Assets	1	23
Statement of Activities	2	24
<b>Governmental Fund Financial Statements</b>		25
Fund Balance Sheet-Governmental Funds	3	26
Reconciliation: Balance Sheet/Statement of Net Assets	3A	27
Statement of Revenues, Expenditures, and Changes in Fund Balances		
Governmental Funds	4	28
Reconciliation: Statement of Revenues, Expenditures, and Changes		
in Fund Balance/Statement of Activities	4A	29
<b>Fiduciary Fund Financial Statements</b>		30
Statement of Net Assets	5	31
Statement of Changes in Net Assets	6	32
<b>Notes to the Financial Statements</b>		33
(An integral part of the financial statements)		

**Required Supplementary Information** 57

Budgetary Comparison Schedule - General Fund	A-1	58
Budgetary Comparison Schedule - Special Revenue Fund (Associated Student Body)	A-2	59
Actuarial Valuation of Post Employment Benefits Other Than Pension		
Schedule of Funding Progress	A-3	60

**Supplemental Data** 61

**Governmental Funds**

<b>General Fund</b>		
Comparative Balance Sheets	B-1	62
Schedule of Revenues, Expenditures and Changes in Fund Balances-Budget and Actual	B-2	63
Schedule of Revenues - Budget and Actual	B-3	64
Schedule of Expenditures by Program - Budget and Actual	B-4	66
<b>Special Revenue Fund (Associated Student Body)</b>		
Comparative Balance Sheets	C-1	68
Schedule of Revenues, Expenditures and Changes in Fund Balances-Budget and Actual	C-2	69
<b>Debt Service Fund (Bond Fund)</b>		
Comparative Balance Sheets	D-1	70
Schedule of Revenues, Expenditures and Changes in Fund Balances-Budget and Actual	D-2	71
<b>Capital Projects Fund</b>		
Comparative Balance Sheets	E-1	72
Schedule of Revenues, Expenditures and Changes in Fund Balances-Budget and Actual	E-2	73

**Auburn School District No. 408**  
**Comprehensive Annual Financial Report**  
**For the Fiscal Year Ended August 31, 2012**

**TABLE OF CONTENTS**

	<u>Schedule No.</u>	<u>Page No.</u>
<b>Transportation Vehicle Fund</b>		
Comparative Balance Sheets	F-1	74
Schedule of Revenues, Expenditures and Changes in Fund Balances-Budget and Actual	F-2	75
<b>Fiduciary Fund</b>		
<b>Private Purpose Trust</b>		
Comparative Statement of Fiduciary Net Assets	G-1	76
Statement of Changes in Fiduciary Net Assets	G-2	77
<b>Employee Benefit Trust</b>		
Comparative Statement of Fiduciary Net Assets	G-3	78
Statement of Changes in Fiduciary Net Assets	G-4	79
<b>Long-Term Debt</b>		
Statement of Changes in Long-Term Debt	H-1	80
Outstanding General Obligation Indebtedness Debt Service	H-2	81
<b>Capital Assets</b>		
Schedule of Capital Assets by Location	I-1	82
Statement of Changes in Capital Assets	I-2	83
Schedule of Capital Assets by Function and Activity	I-3	84
<b>Bond Amortization</b>		
Summary Amortization Schedule for All Outstanding Bonds		
Bond Premium, Discount, Refunding Adjustment	J-1	85
Amortization Schedule – Bond Premium and Refunding Adjustment-2004 Bonds	J-2	86
Amortization Schedule – Bond Premium-2005 Bonds	J-3	87
Amortization Schedule – Bond Premium-2006 Bonds	J-4	88
Amortization Schedule – Bond Premium and Refunding Adjustment-2010 Bonds	J-5	89
Amortization Schedule – Bond Premium-2012 Bonds	J-6	90
Amortization Schedule – Bond Premium and Refunding Adjustment-2012 Bonds	J-7	91
 <b>III. STATISTICAL SECTION</b>		
	<u>Table No.</u>	<u>Page No.</u>
Net Assets by Component-Last Ten Fiscal Years	1	93
Changes in Net Assets-Last Ten Fiscal Years	2	94
Fund Balances, Governmental Funds-Last Ten Fiscal Years	3	95
Changes in Fund Balances, Governmental Funds-Last Ten Fiscal Years	4	96
Revenues by Source-Fund Level-Last Ten Fiscal Years	5	97
General Expenditures by Function-Fund Level-Last Ten Fiscal Years	6	98
Interest Earnings on Investments-Last Ten Fiscal Years	7	99
Property Tax Levies and Collections-Last Ten Calendar Years	8	100
Assessed and Estimated Actual Value of Taxable Property-Property Tax Rates-All Overlapping Taxing Authorities-Last Ten Years	9	101
Ratio of Annual Debt Service for General Bonded Debt to Total General Fund Expenditures-Last Ten Fiscal Years	10	102
Ratio of Net General Bonded Debt Per Capita Ratio of Net General Bonded Debt to Personal Income-Last Ten Fiscal Years	11	103
Statement of Direct and Overlapping Bonded Debt	12	104
Computation of Legal Debt Margin	13	105
Legal Debt Margin Information-Last Ten Fiscal Years	14	106

**Auburn School District No. 408**  
**Comprehensive Annual Financial Report**  
**For the Fiscal Year Ended August 31, 2012**

**TABLE OF CONTENTS**

	<u>Table No.</u>	<u>Page No.</u>
Demographic and Economic Statistics-Last Ten Fiscal Years	15	107
Principal Taxpayers, Current Year and Ten Years Ago	16	108
Property Value and Construction-Last Ten Years	17	109
Major Employers Current Year and Ten Years Ago	18	110
Full Time Equivalent District Employees by Program-Last Ten Fiscal Years	19	111
Operating Statistics-Last Ten Fiscal Years	20	112
Capital Assets by Function Last Ten Fiscal Years	21	113
Schedule of School buildings Grade Span, Enrollment, Age and Size	22	114
Miscellaneous Statistics	23	115

# Auburn School District No. 408

## Directory of Officials ~ August 31, 2012

**School Board:**

Lisa Connors, President  
 Anne Baunach  
 Janice Nelson  
 Ray Vefik  
 Carol Seng

**Term and First Elected:**

4-Year Term, First Elected - 2007  
 4-Year Term, First Elected - 2011  
 4-Year Term, First Elected - 1997  
 4-Year Term, First Elected - 1998  
 4-Year Term, First Elected - 2002

**Term Expires:**

November 2013  
 November 2015  
 November 2013  
 November 2015  
 November 2015

**Administrative Staff:**

Dr. Kip Herren.....Superintendent  
 Mike Newman.....Deputy Superintendent, Business and Operations  
 Tim Cummings.....Associate Superintendent, Human Resources  
 Rod Luke.....Associate Superintendent, Student Learning and Technology  
 Louanne Decker.....Associate Superintendent, PK-12 School Programs  
 Gordon O’Dell..... Executive Director, Student Services  
 Rhonda Larson.....Executive Director, Student Special Services

**Principals:**

*Elementary Schools:*

Diane Collier.....Alpac	Colleen Barlow.....Gildo Rey	Ed Herda.....Lea Hill
Eric Daniel.....Arthur Jacobsen	Sally Colburn.....Hazelwood	Debra Gary.....Pioneer
Jennifer Davidson.....Chinook	Tim Carstens.....Ilalko	Tom Dudley.....Terminal Park
Adam Couch.....Dick Scobee	Mike Weibel.....Lake View	Pauline Thomas.....Washington
Anne Gayman..Evergreen Heights	Ryan Foster.....Lakeland Hills	

*Middle Schools:*

Isaiah Johnson.....Cascade  
 Greg Brown.....Mt. Baker  
 Jason Hill.....Olympic  
 Ben Talbert.....Rainier

*High Schools:*

Richard Zimmerman.....Auburn  
 Terri Herren.....Auburn Mountainview  
 Dave Halford.....Auburn Riverside  
 Lenny Holloman.....West Auburn

**Comprehensive Annual Financial Report Contributing Staff:**

Toni Lally, CPA, Executive Director of Business  
 Debra Bodkins, Senior Accountant  
 Debra Podesta, Accounting Systems Analyst  
 Andrea Hollister, District Publications Tech



# Auburn School District No. 408~Board of Directors and Superintendent



***Lisa Connors, First Elected or Appointed: December 2007 ~ District 5***

Lisa Connors holds a Bachelor's Degree in Interdisciplinary Arts & Science, Political Views. Her administrative and business background includes banking, human resources, construction, project management, sales and politics. This wide range of experience provides a natural passion for her school board work in the areas of student achievement, capital projects, board policy, and the Auburn Public Schools Foundation. Lisa is an active member of the community and believes collaboration and communication are essential to increasing student achievement. In addition to the School Board, she serves on the Board of Directors for Auburn Youth Resources, the Auburn Area Chamber of Commerce Economic & Governmental Affairs Committee and the Auburn Noon Lions Club. She is a Founding Trustee for the Auburn Public Schools Foundation and served on its design team for 2 years. Lisa encourages all parents and community members to volunteer for their community, schools, and local PTA. Mrs. Connors was instrumental in creating the new Auburn High School PTSA and served as its founding president for 2 years. She has also served extensively in her elementary PTA. She was the chairperson for the Reading Program, promoting literacy and providing free books to students. She created an after-school program serving 100-300 students annually that offered a variety of classes in art, science and writing. Lisa has lived in Auburn since 1997 and has three sons in the Auburn School District.



***Anne Baunach, First Elected or Appointed: December 2011 ~ District 4***

Anne Baunach has been actively engaged in the Auburn community for the last twelve years with a focus on education. She has been active in several district committees focused on strategic planning, setting attendance area boundaries, and community use of district facilities. She has also been active with Auburn Citizens for Schools and several PTA groups over the years at her children's schools. Anne and her family have lived in Auburn since 1996 and have one child currently attending Auburn Riverside High School and one at Whitworth University. Anne is the Director of Resource Development at Argos International.



***Janice Nelson, First Elected or Appointed: May 1997 ~ District 3***

Janice Nelson has a focus of finding opportunities to include all people. She spends many hours building relationships with community organizations and events such as the Soroptomists, Auburn Chamber of Commerce, Uniquely Auburn committee (of which she is co-chair), and Reaching Out Fair. "Partnerships and collaborative efforts are such an important part of this community," says Ms. Nelson. Ms. Nelson has lived in Auburn since 1992 and her daughter graduated from Auburn High School. She is a Program Manager at Trillium, an employment service for people with developmental disabilities.



***Ray Vefik, First Elected or Appointed: June 1998 ~ District 1***

Ray Vefik has extensive years of experience as a volunteer and supporter of Auburn schools. He served as PTA president of Dick Scobee Elementary in 1986-87 and as president of the Auburn Council of PTAs, 1990-92. He was an integral part of the district's attendance area committee which was formed in 1990 and proceeded to serve on several more attendance area committees until 1998. Mr. Vefik also served on the Auburn School District's Ad Hoc Committee in 1994 and chaired the renovations sub-committee. Mr. Vefik and his family have lived in Auburn since 1985. His son is a graduate from Auburn schools and Mr. Vefik has two grandchildren attending Auburn schools. Mr. Vefik is a project manager/architect.



***Carol Seng, First Elected or Appointed: June 2002 ~ District 2***

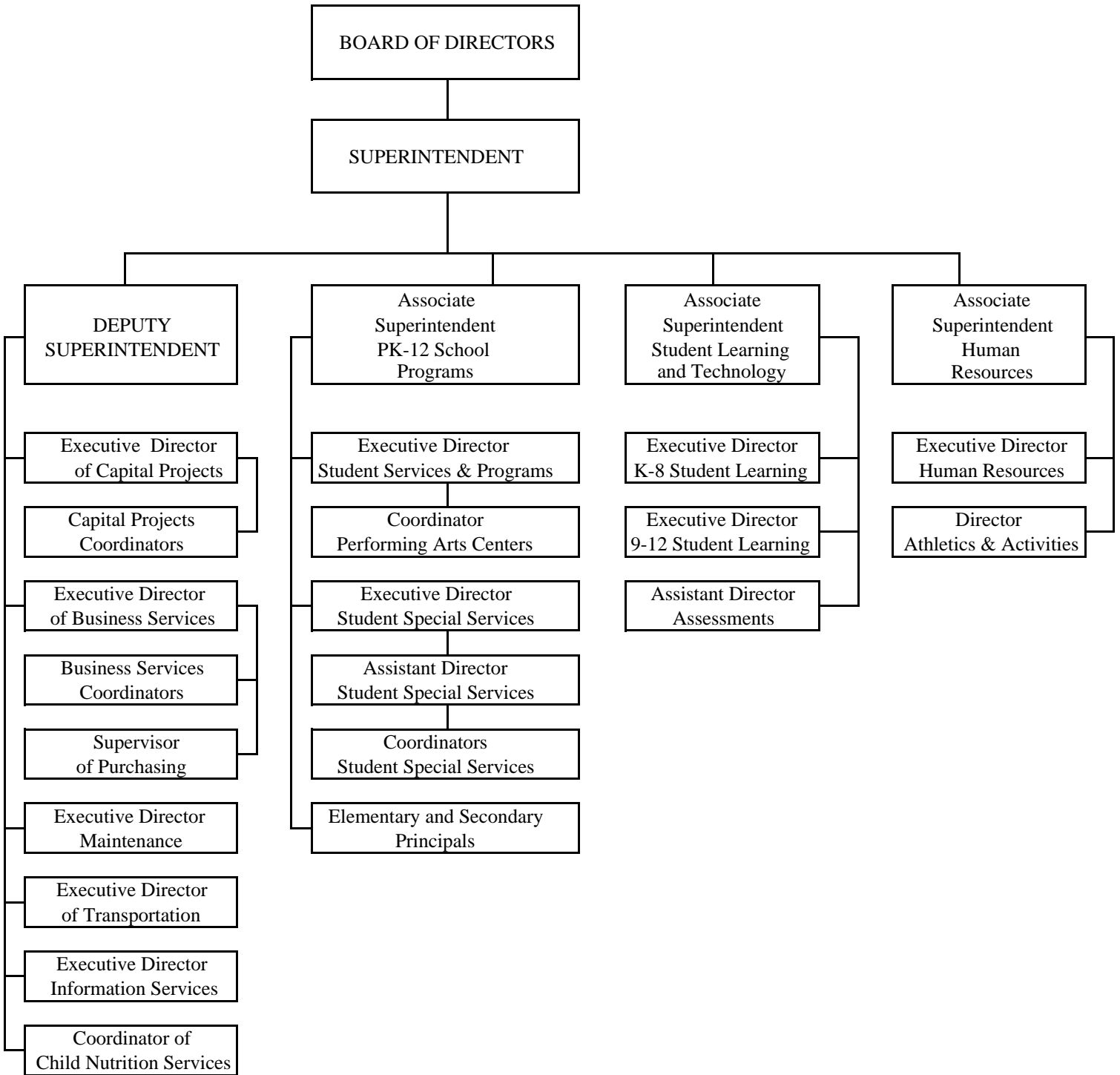
Carol Seng is focused on ensuring all children in Auburn achieve at the high levels. Ms. Seng brings a background in leadership and policy development to the Board. She is a strong believer that the School Board must be visible and strong advocates to ensure that all children are provided the resources needed to succeed in a safe environment. Carol comes from a family of educators and recognizes the importance of building strong parent and community relationships. Her two children are both graduates of Auburn Schools.



***Dr. Kip Herren, Superintendent of Auburn Schools***

Dr. Kip Herren has enjoyed working in the field of education for 37 years, 33 of those years dedicated to the Auburn School District. He has been a teacher, a principal, central office administrator, and, currently, is superintendent of Auburn schools. Kip is active in a variety of civic organizations including, president of the YMCA, president of Rotary, and president of the Chamber of Commerce. He is in the Washington State Wrestling Coaches Hall of fame and has been honored as a Forensic Administrator of the Year. He was adjunct professor of educational policy and finance for the University of Washington at Tacoma where he currently serves on the school's Professional Education Advisory Board. His passion and advocacy for student learning is well known in the community.

**AUBURN SCHOOL DISTRICT NO. 408**  
**ORGANIZATIONAL CHART**  
 August 31, 2012





March 25, 2013

Members of the Board of Directors, and the  
Citizens of the Auburn School District

We are pleased to present to you the Comprehensive Annual Financial Report (CAFR) for Auburn School District No. 408 for the fiscal year ended August 31, 2012. This report presents complete information about the district's financial position at year-end and financial activities during the fiscal year. We feel that the report illustrates the efforts of the administration to attain the financial goals established by the Board.

The accuracy of the data presented, including all disclosures and the completeness and fairness of the presentation, is the responsibility of the management of the District. The District's comprehensive framework of internal controls has been designed to provide reasonable assurance that the financial statements will be free from material misstatement. In addition to ensuring that adequate accounting data are compiled to allow for the preparation of financial statements in conformity with generally accepted accounting principles (GAAP), the District's internal control structure also provides reasonable assurance that the assets of the District are protected from loss, theft or misuse. The concept of reasonable assurance recognizes that the cost of controls should not outweigh their benefits. Consequently, as management, we are able to assert that to the best of our knowledge and belief, this financial report is complete and reliable in all material respects.

Washington State statutes require that state school districts be audited by the Office of the State Auditor. That independent auditor's unqualified "clean" opinion on the District's financial statements for the year ended August 31, 2012 is located at the front of the financial section of this report. The independent audit of the District's financial statements was part of a federally mandated "Single Audit" required by federal agencies that have provided grants to the District. Single Audits require the independent auditor to report not only on the fair presentation of the financial statements, but also on the audited government's internal controls and compliance with legal requirements, with special emphasis on internal controls and legal requirements involving the administration of federal awards. These reports are available in the District's separate issued Single Audit Report.

Management's discussion and analysis (MD&A) immediately follows the independent auditor's report and provides a narrative introduction, overview and analysis of the basic financial statements. The MD&A complements this letter of transmittal and should be read in conjunction with it.

### ***District profile***

Auburn School District provides public education to preschool through twelfth grade students. The public education provided includes a strong academic program of basic education, a comprehensive education for special education students, including preschool, a career and technical education program at the secondary level, a special program for academically gifted students, and alternative programs for those students requiring individualized learning opportunities.



The District is located in western Washington, in southern King and northern Pierce Counties. It includes the cities of Auburn, Algona and Pacific and small portions of the cities of Black Diamond and Kent. Auburn is approximately 28 miles southeast of the City of Seattle and 15 miles northeast of the City of Tacoma. The District covers an area of over 62 square miles with an estimated population of 84,947 residents. Auburn School District operates fourteen elementary schools, four middle schools and four high schools. Please see the Statistical Section, Schedule 22 for details of each building's size, age and enrollment.

Student enrollment figures presented below are for historical and projected October 1 full-time equivalent students.

	Historical		Projected
October	Enrollment	October	Enrollment
2012	14,596	2013	14,661
2011	14,363	2014	14,920
2010	14,482	2015	15,147
2009	14,589	2016	15,554
2008	14,703	2017	15,871

Auburn School District is a legally separate entity enjoying all rights and privileges accorded political subdivisions in the State of Washington. The District is fiscally independent. Policymaking and legislative authority are vested in the Board of Directors consisting of five members elected by the voters of the District for staggered four-year terms. The Board is responsible for, among other things; developing policy, adopting the budget, levying taxes, incurring bonded debt, supervising committees, and hiring the Superintendent.

Budgetary control is maintained at the fund level that is the legal level of budgetary control. The district records encumbrances when a commitment is made for the acquisition of goods or services in order to facilitate effective budgetary control. Encumbered amounts lapse at the end of the fiscal year. However, they are generally reappropriated as a part of the following annual budget.

***Local economy***

Auburn is enjoying an increasingly diversified economy made possible by its location, its greatest economic asset. Near two major ports, two excellent rail hubs and the intersection of two major state highways, Auburn has attracted successful regional warehouse and distribution facilities, a regional medical center, entertainment facilities such as casinos and an amphitheater, a regional shopping mall and federal agencies such as the Federal Aviation Administration (FAA), the Social Security Administration and Region 10 of the U.S. General Services Administration (GSA).

As the district's largest employer and taxpayer, the Boeing Fabrication Division continues with a steady 6% of assessed valuation for property tax purposes. The projected future shape of the Boeing Company will continue to include the Auburn fabrication plant as it works to fill a

seven-year global backlog of airplane orders. Boeing jobs account for only 17.5% of the employment base in Auburn as the local economy continues to diversify.

A bright spot in the local economy continues to be the economically successful ventures of the Muckleshoot Indian Tribe. As the second largest employer in the district, the tribe operates two casinos generating \$2 million dollars a day in revenue, a bingo hall, an amphitheater for large outdoor concerts by big name entertainers, small shopping malls and smoke shops.

With a large stock of affordable housing as well as large new residential developments, Auburn continues to be a popular choice for young families. Conveniently located between Seattle and Tacoma as well as being close to several large employers such as Weyerhaeuser, the SuperMall, an Amazon distribution center and other large Boeing plants, Auburn residents enjoy short commutes and have time to participate in school and community activities.

### ***Long-term financial planning***

The 2004-05 Citizen's Ad Hoc Committee recommended the district conduct a detailed review of all district facilities and develop a Facilities Master Plan. In 2006, the school district began preparation of a Facilities Master Plan to address Auburn School District's facility needs during the next 10 years. This process included the formation of a Steering Committee in 2008 to provide recommendations for facility modernizations, replacement facilities, new facilities and property acquisitions. The Steering Committee recommended replacement of Auburn High School, Olympic Middle School, Chinook, Dick Scobee, Lea Hill, Pioneer and Terminal Park Elementary Schools. All of these schools have exceeded their economic life span and have an estimated cost of modernization that is more than 70% of their replacement cost.

As the first phase of this facility modernization process, voters passed a proposition for a \$46,400,000 capital improvements levy to fund improvements at 18 schools and six support facilities. After reviewing over 2,700 proposed projects, the Steering Committee selected those improvements that will reduce operating costs, improve health and safety, enhance learning and facility operations, improve accessibility and support physical activity and community uses. The capital improvements levy is for six years beginning in 2010 for the 2010-11 school year through 2015 for the 2015-16 school year. The levies are as follows:

\$12,000,000 for 2010 tax year at an actual rate of \$1.35 per \$1,000 of assessed value  
\$10,000,000 for 2011 tax year at an actual rate of \$1.40 per \$1,000 of assessed value  
\$11,700,000 for 2012 tax year at an actual rate of \$1.44 per \$1,000 of assessed value  
\$ 3,900,000 for 2013 tax year at an estimated rate of \$ .50 per \$1,000 of assessed value  
\$ 4,400,000 for 2014 tax year at an estimated rate of \$ .56 per \$1,000 of assessed value  
\$ 4,400,000 for 2015 tax year at an estimated rate of \$ .55 per \$1,000 of assessed value

District voters also approved a four year replacement levy on February 14, 2012 to maintain current education programs and services. Although it is the State's "paramount duty" under the State constitution to make "ample" provision" for education, the District must seek additional local funding of about 28.9% of general operational expenditures to provide quality educational programs for all students. Over 43% of levy dollars are spent for an additional 100 educators and support staff to lower class size especially in kindergarten through third grade. Research has shown that funds spent on early education reap the biggest achievement gains in student

learning. Consequently Auburn School District's 2012 state test scores are the highest in district history and above the state average in reading, writing and mathematics.

The balance of the replacement levy dollars are spent on other programs and operations underfunded by the state. These include special education services for special needs students, all athletic and activities programs, honors and college advanced placement programs, teacher training, curriculum adoptions, summer school programs, pupil transportation operations and maintenance and custodial services. These levies are as follows:

\$33,600,000 for 2013 tax year at an estimated rate of \$4.05 per \$1,000 of assessed value  
\$35,600,000 for 2014 tax year at an estimated rate of \$4.16 per \$1,000 of assessed value  
\$37,600,000 for 2015 tax year at an estimated rate of \$4.31 per \$1,000 of assessed value  
\$39,600,000 for 2016 tax year at an estimated rate of \$4.45 per \$1000 of assessed value

The combined tax rate for all funds including the capital improvements levy above was \$6.14 per \$1,000 of assessed value for 2012.

On November 6, 2012, voters approved the second phase of the facility modernization plan by passing a \$110 million Auburn High School Modernization and Reconstruction bond. Funds will be used to build a new three story Auburn High School classroom building and modernize the Performing Arts Center and Automotive Technology buildings. Tentative plans call for three bond sales beginning with \$59,265,000 on January 8, 2013, followed by sales in December 2013 and 2014. The combined tax rate for all funds is projected to be \$6.62 per \$1,000 of assessed value for 2013.

As part of the January 8, 2013 bond sale, the District also advance refunded \$20,000,000 of the 2005 bond issue. This refunding will result in over \$3 million of savings over the life of the bonds from 2013 to 2024. It has always been the District practice to aggressively refinance bonds whenever it has been financially advantageous.

### ***Relevant financial policies***

As a budget policy, the District does not use one-time funds for ongoing District operations. As an example, Federal stimulus funds were generally used for one-time expenditures such as supplies, equipment and pilot projects.

District policies require line item control on all budgeted expenditures. Principals, program administrators and grants managers are held accountable for their building and program allocations.

Tax levies and bond issues are structured to maintain a level annual tax burden on District tax payers.

### ***Major initiatives***

**Capital projects.** A major initiative of the 2012 year was to obtain community support for the \$110 million Auburn High School Modernization and Reconstruction Bond. While a majority of voters in Auburn School District voted yes on February 14, 2012 for the bond issue, the vote did not meet the 60% threshold necessary for passage. The measure received a 56.24% yes vote.

When it was resubmitted to the voters on November 6, 2012, the measure passed with a 62% yes vote.

The community's support to begin the critical reconstruction of Auburn High School is a testament to Auburn's commitment to provide 21<sup>st</sup> century teaching and learning environments for all students. Auburn High School, built in 1950 and expanded five times since then, needs to be replaced because the cost to remodel the school exceeds 70% of the cost of a new building. The construction of the new three story brick classroom building will be on the East Main Street side of the current campus so students can safely remain in the current building on 4<sup>th</sup> Street NE during the project. This building is scheduled to open September 2014 when improved energy efficiencies will begin to save the District \$250,000 in annual operating costs. By the time that the last phase of the project is finished in 2016, the performing arts center and auto shop buildings will be modernized, over 300 parking stalls will have been added, and new synthetic turf baseball and softball fields will be completed.

**Foundation.** Another major initiative during the year was the creation of the Auburn Public Schools Foundation (APSF), a new independent, community-based, non-profit 501(c)3 organization. The foundation recognizes the fact that public funds alone cannot adequately support the essential efforts to advance student achievement in the District. Its mission is to build financial partnerships with individuals, corporations and foundations so that all students have the resources they need to achieve academic excellence. APSF plans to raise funds through corporate donations, grants, gifts, corporate sponsorships and special events with various alumni groups.

**Grants.** Auburn School District joined six other King County school districts-Federal Way, Highline, Kent, Renton, Seattle and Tukwila to win a \$40 million Race to the Top grant. It was one out of 16 winners selected out of 372 applications nation-wide and 1 of only 2 applicants to win the maximum award of \$40 million. The winning plan covers 261 schools and 150,000 students, including 36,000 high-needs children. The districts will use the four-year grant to implement plans to help students "Start Strong," be "STEM Strong" and "Stay Strong". It will provide funds to help districts work with preschools and early learning programs to help kids be ready to start their academic lives strong in kindergarten. Funds will be provided to support Science, Technology, Engineering and Math (STEM) career readiness programs. The grant will also support strategies that will help more students stay strong and be successful in postsecondary education.

### ***Awards and acknowledgements***

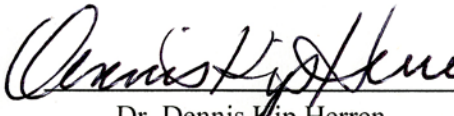
The Association of School Business Officials (ASBO) established the Certificate of Excellence in Financial Reporting Program to encourage school districts to publish outstanding financial reports. ASBO has awarded a Certificate of Excellence to Auburn School District No. 408 for its Comprehensive Annual Financial Report for the fiscal year ended August 31, 2011 its twenty-third such award for the district. In order to be awarded such a certificate, a school district must publish an easily readable and efficiently organized Comprehensive Annual Financial Report, the contents of which must conform to program standards. Such reports must satisfy both generally accepted accounting principles and applicable legal requirements. This certificate is valid for a period of one year.

We believe our current report continues to conform to the principles and standards of the Certificate of Excellence program requirements, and we are submitting it to ASBO to determine its eligibility for another certificate.

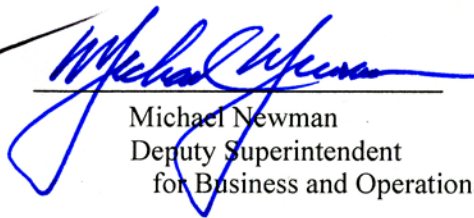
We would like to express our appreciation to the school board, managers, principals, and program directors for their responsible participation in the sound financial management of the district. We wish to thank the Washington State Auditor's Office for the timely completion of their audit and their professional assistance in the preparation of this report. Special appreciation is also expressed to the entire Business Services staff for the excellent maintenance of the financial records of the district and the preparation of this report.

The financial section of this report, which immediately follows this introductory section, includes the financial statements and supplemental data of the district accompanied by our auditor's opinion. It is followed by the statistical section, which contains a number of tables of unaudited data depicting the financial history of the district for the past 10 years, information on overlapping governments, and demographic and other miscellaneous statistics.

Respectfully submitted,



Dr. Dennis Kip Herren  
Superintendent and  
Board Secretary



Michael Newman  
Deputy Superintendent  
for Business and Operations

# Association of School Business Officials International



*The Certificate of Excellence in Financial Reporting Award  
is presented to*

## **Auburn School District No. 408**

*For Its Comprehensive Annual Financial Report (CAFR)  
For the Fiscal Year Ended August 31, 2011*

The CAFR has been reviewed and met or exceeded  
ASBO International's Certificate of Excellence standards



A handwritten signature in black ink, reading 'Brian L. Mee'.

Brian L. Mee, SFO, RSBA  
President

A handwritten signature in black ink, reading 'John D. Musso'.

John D. Musso, CAE, RSBA  
Executive Director